

Remember...

Lake Idlewild, in the early 1930's, was simply a small pond on a 40 acre tract of land along the Little Blue River north of Waterville. To the locals, it was a little place to go to find a cool breeze. Then, in 1934, President Franklin Roosevelt created the WPA – Works Progress Administration – for the purpose of offering jobs to the unemployed after the Great Depression. Thus, an opportunity to develop the Lake Idlewild acreage was available. In 1934, a dam was constructed with the aid of the WPA, making Lake Idlewild an historic site. In the 1950's, the lake is fondly remembered as the site of the Water Carnival. The Carnival was a celebration of swimming and boat racing, picnics and beauty contests. And, "A place to fall in love by the moonlight."



Get Involved

Like our Facebook page:
"Lake Idlewild Revitalization"

Share your memories, photos, and find
ways to volunteer

To make your pledge or tax deductible
gift visit www.thekrcf.org or mail to:

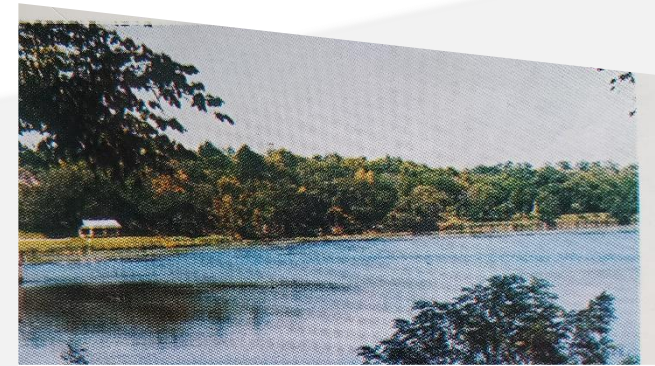
KS Rural Communities Foundation

ATTN: Endow Waterville Fund

PO Box 396, Wamego, KS 66547

*For more information, contact Ann Walter
785-799-4294*

annwalter@bluevalley.net



Imagine...

Is it possible that this local gem can be restored?
YES! We recognize the possibilities of a local,
natural area for citizens and families to once
again enjoy the outdoor recreation opportunities
that Lake Idlewild can provide.

PROPOSED RESTORATION CONSIDERATIONS:

- Dredge the lake to restore a healthy depth
- Make erosion and aeration improvement to keep the newly dredged lake healthy
- Provide clearing, planting of forage and cover
- Create a small beach area
- Restore restrooms and covered picnic areas
- Stabilize roads and improve parking area
- Make handicapped accessible
- Restore fishing with docks and access points (the State will stock the lake)
- Provide hiking and biking trails and allow kayaking and canoeing

What will it take?

Years of erosion has silted in the lake, and uncontrolled growth of trees, brush and weeds have penetrated the shoreline.

Members of the lake committee – led by Waterville Mayor Rich Anderson – began the restoration effort during the fall of 2020. Volunteers are clearing brush and trees along the lakeshore and trails, but professional help is needed. Dredging the lake is a necessary, but costly, part of the project.

Federal and State grants for restoration are being researched and applied for by Marshall County's Economic Development director, but matching funds will be required with each grant awarded.

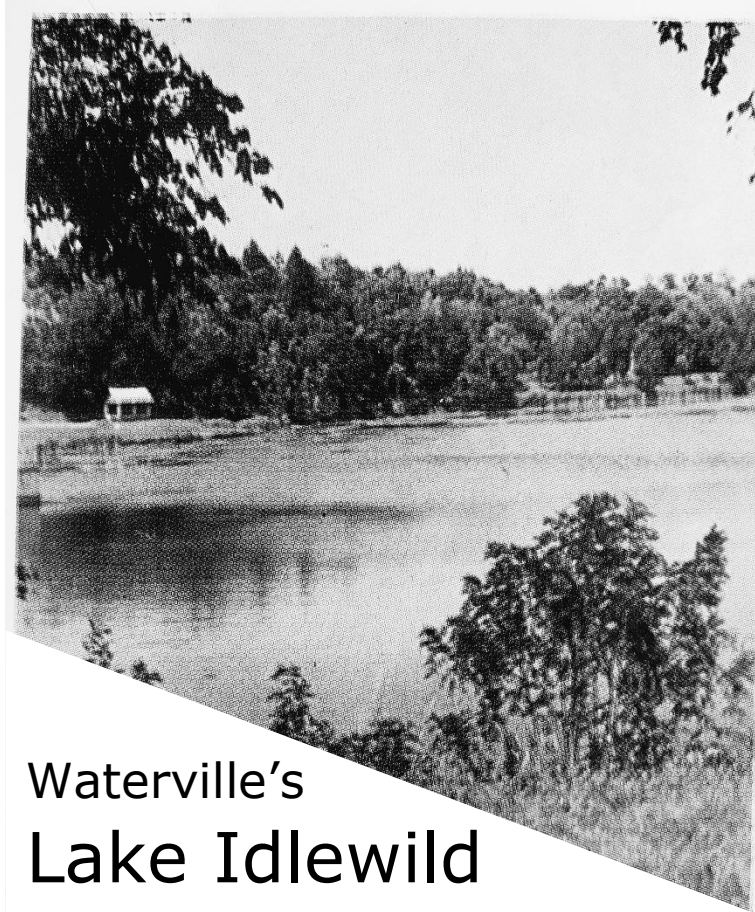
It will take YOU!

- Like our Facebook page, "Lake Idlewild Revitalization." Share your memories, photos, and find ways to volunteer.
- To make your pledge or tax deductible gift visit www.thekrcf.org or mail to:

Kansas Rural Communities Foundation

Endow Waterville Fund

PO Box 396, Wamego, KS 66547



Waterville's Lake Idlewild

Remember?
...Imagine!

